

WELCOME TO PRIOR PURSGLOVE COLLEGE

NEW PARENTS' EVENING
20th SEPTEMBER 2023



Welcome

Who is who in college

Senior Leadership Team	
Asma Shaffi - Principal Michael Mackin – Vice Principal Olivia Wytcherley – Vice Principal	
Adventure	Discovery
Jane Britton/Fiona Webb - Faculty Managers	Paul Grainger - Faculty Manager
Kerry Robson - Deputy Faculty Manager	Helen Kirk - Deputy Faculty Manager
Cathal Devlin - Deputy Faculty Manager	Ryan Matthewman - Deputy Faculty Manager
Caroline Haggath/Kelly Lowe – Faculty Secretaries	Christine Driver – Faculty Secretary
Fortitude	Resolution
Joanne Devlin - Faculty Manager	Lesley Currie - Faculty Manager
Paul Sudlow - Deputy Faculty Manager	Kris Lord - Deputy Faculty Manager
Joanna Prescott - Deputy Faculty Manager	Suzanne Taylor - Deputy Faculty Manager
Sam Benson – Faculty Secretary	Sharyn Young – Faculty Secretary

The story of 22/23

- 97.5% pass rate across all courses
- 40% high grades (A*-B),
- 62% of students have gone onto university, with over a quarter securing places at Russell Group Universities.
- 9 Students secured places at Oxbridge Universities.
- 5 students secured a place to study Medicine/Vet Science
- High quality degree apprenticeships secured including: 2 Solicitor apprenticeships, 2 Mechanical engineering, 1 Civil Engineering and 1 Nuclear Engineering



Key aims and expectations



- We believe that every student can succeed however, they must work hard to achieve their goals
- Individual support will be given to all students to help them achieve their potential
- We aim to achieve a healthy work/life balance and develop independent study skills



Linear A levels:

- Students study A levels for 2 years **without** an external exam at the end of year one.
- Most students concentrate on 3 key subjects.
- Assessment is mainly by examination.
- Non-exam assessment only where necessary.
- Grading remains A* to U.

What do Universities say?

University of Cambridge

“prefer applicants to develop a broader and deeper knowledge of their subjects rather than to accumulate additional A Levels. We expect to see evidence of a student’s ability to cope with a workload equivalent to 3 A Levels taken simultaneously”.

*Students taking Maths and Further Maths are the exception to this

What do Universities say?

University of Manchester

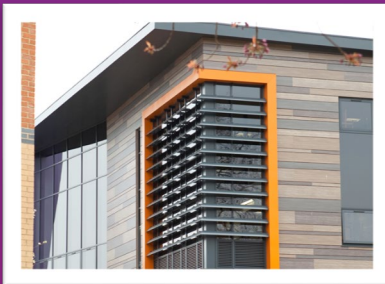
“assess each application holistically. If you are taking more than 3 A Levels, additional A levels will not be included in offers. We only make offers consisting of 3 A level grades”.

University of York

“are looking for evidence of a student’s ability to sustain concentrated and progressive study”.

Applied General Qualifications - BTEC and Cambridge Techs

- Taken over two years
- Equivalent to 1 or 2 A levels
- Exam and Coursework based
- Can gain a qualification after one year (equivalent to half an A-level)





- Prior + draws together the strands of a student's individual study programme and gives the student the chance to leave college with more skills and experiences than just those gained through academic qualifications.
- Prior + encourages students to seek out experiences that maintain their health, contribute to local community, develop employability skills, and enhance general skills and interests.
- Depending on their involvement, students can strive to move up through three levels
 - Bronze
 - Silver
 - Gold

Pathway Leader Support

- 1-hour session each week where Pathway leaders offers support and guidance.
- Students follow a programme of taught sessions and eLearning tasks to help them develop life skills & achieve their full potential.



Other Support



- Faculty Management teams.
- Careers Advisers – Diane Bate and Beth Cairns
- Counselling Services – Adele Holmes and Simone Silvisitris
- Learning support for SEN students
- Employability and Work Experience – Claire Powell

More about careers at PPC

- Diane Bate/Beth Cairns are the college careers adviser
- All students have a statutory right to Careers advice
- Diane is available 4 days a week, Beth 1 day a week
- First year students need to be referred by a manager in term 1
- From term 2 onwards, any first year can see Diane/Beth by making an appointment
- Students follow a careers programme through pathway support sessions.
- Parents can view the careers programme on the college website
- Please advise students to check their emails and the MS Careers Team at least twice a week.
- There are huge numbers of opportunities posted every day – students need to be proactive.

Enrichment



Choir practice



Work experience

Music
Drama/Dance
Sport
Work Experience
Voluntary Work
Student Union
Enterprise

Foreign Trips
Theatre Visits
Magazines
Debates
Citizenship
Music Events
Charity Events

All 1st year students have a compulsory enrichment session on their timetable



Prior
Pursglove
College

Literacy and Numeracy

- Aim – all students working towards GCSE English and Mathematics if GCSE grade is below 4
- All students assessed in literacy and numeracy to determine appropriate levels of support (offered through Skills Building sessions)
- Catch up funding available to support learners who achieved grade 4 or less to secure

How we monitor progress

- Target grades based on GCSE results.
- Regular assessments measured against target grades to monitor progress (known as KAGs – Key Assessment Grades).
- Outcomes of 2 KAGs are sent to parents each year, in January and July.
- At risk students are supported.
- Attendance monitored weekly and parents informed where concerns exist.

Key Dates – year 1

Assessments & parents' evenings

Year 12

- **Initial assessment** (Grades 3,4 & 5). W/C 11.09.22. Grades available from 12 noon on Monday 02.10.22
- **KAG 1** – In class assessment taken during November within the 90 minute lesson. Grades available from 12 noon Friday 01.12.23.
- **KAG 2** - w/c 22.01.24. **Block week***. Catch up day Thursday 25.01.24. Grades available from 12 noon on Monday 26.02.24
- **KAG 3** - w/c 17.06.24 1st year only. **Block week*** Catch up day Thursday 20.06.24. Grades available from 12 noon Monday 01.07.24

Trial Exam Week (Block week timetable)	Morning 9 am to 12 am	Afternoon 1pm to 4pm
Monday	Block D	Block C
Tuesday	Block B	Block A
Wednesday	Block F	Block E
Thursday - Catch up day for any students who have missed exams during the week. Work will be set for students not involved.		

Leading to Success

- Aim at achieving half a grade better than the target grade.
- Achieve high grades A*, A and B as set out in targets.
- 100% attendance.
- Successfully achieve target grades in KAG outcomes.

If we have concerns

Discussion and action plans with students

We may also contact parents

If YOU are concerned – what to do.....

Phone the college on 01287 280800

ppc.enquiries@tvc.ac.uk

The college day

Prior Pursglove Timetable 2023/24

	9.00	10.00	11.00	11.15	12.15	1.00	2.00	3.00
Period								
Mon	D 1hr	D 1hr	Flexi 15 mins	A 1hr	Lunch (45 mins)	F 1½	C 1½	
Tues	E 1hr	E 1hr	Flexi 15 mins	Tutor 2 1hr	Lunch (45 mins)	B 1½	A 1½	
Wed	F 1hr	F 1hr	Flexi 15 mins	C 1hr	Lunch (45 mins)	E 1hr	D 1hr	Enrichment 1hr
Thurs	B 1hr	B 1hr	Flexi 15 mins	Tutor 1 1hr	Lunch (45 mins)	A 1hr	A 1hr	F 1hr
Fri	C 1hr	C 1hr	Flexi 15 mins	D 1½ hr		Lunch (45 mins)	B 1 hr	E 1½

Managing Workload

- College Day – 9.00 to 4.00
- Private Study Periods
- 2 hours of compulsory study
- Advise 4.5 hours additional study per subject per week
- Support classes and Skills Builder classes
- Subject support
- Part-time work under 10 hours per week



Attendance

- Aim for 100%
 - ❖ 90% equates to 38 days missed over a 2 year programme
- Absences require parental confirmation
- Avoid holidays in term time unless there are exceptional circumstances
- Book appointments in non-contact time
- 2nd year classes start in June

Term Dates - PPC

(Access via college website or learner portal)

Autum	All students together from	6th September 2023
	Half Term	30th October – 3rd November 2023
	PD Day – college closed to students	6th November 2023
	Long Weekend	30th November – 1st December 2023
	Term Ends	19th December 2023
Spring Term	Begins	3rd January 2024
	Half Term	12th – 16th February 2024
	Term Ends	28th March 2024
Summer Term	Begins	16th April 2024
	Public Holiday	6th May 2024
	PD Day – college closed to students	7th May 2024
	Half Term	27th – 31st May 2024
	Term Ends	15th July 2024

Parent Consultation Evenings

Parents evenings will take place from

- 25/4 & 01/05 - 4:30 to 7:30

Information regarding appointments will be sent to you in January 2023, there is an online booking system, or you can phone college.

Exam information

Exam Periods:

- November: (GCSE resits) 6th - 13th November inclusive
- January: (BTEC/Applied) 10th – 18th January inclusive
- Summer: Beginning of 1st May – end of June inclusive
- Please note that these are external exams which cannot be moved.

Parent Advantage

- In the coming weeks you will receive an email with instructions on how to access Parent Advantage which will allow you to view attendance and academic performance for your student.
- If you do not receive this email please ask your student to send us your email address via their college email account so that we can verify your email address and set up your login details.

Thank you for your time

Any questions?

ppc.enquiries@tvc.ac.uk

